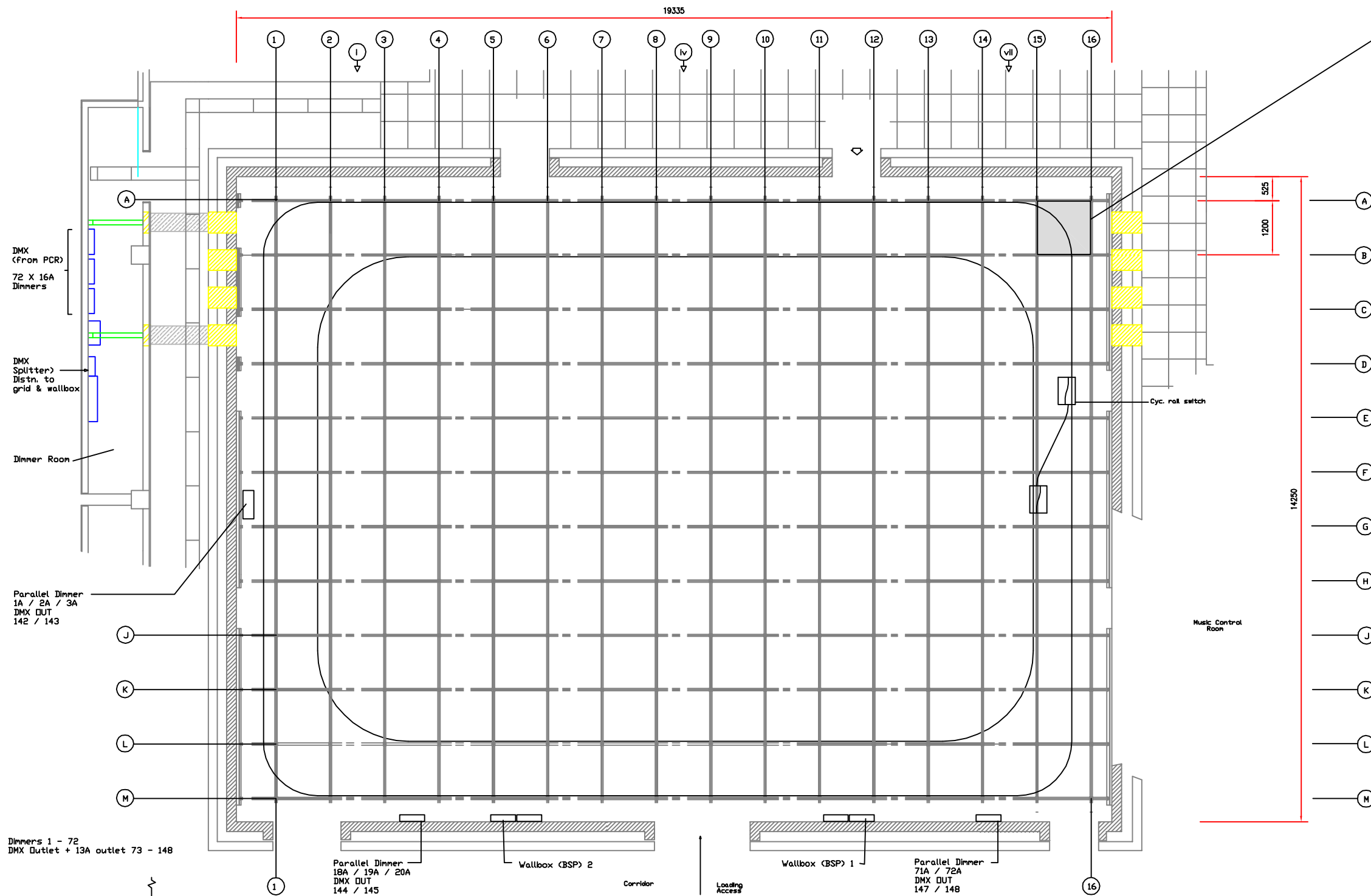
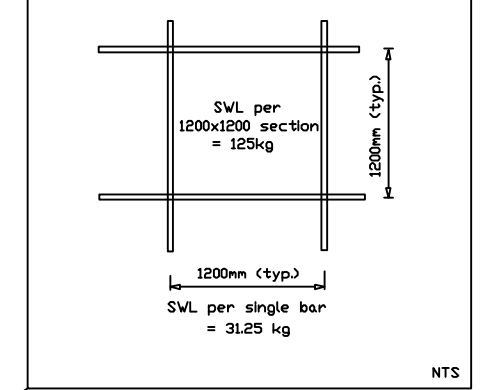


Lighting grid - weight loading - SWL



| Lighting grid 16A / DMX outlets  |                                 |
|----------------------------------|---------------------------------|
| Outlets between grid poles (A-M) | Outlet range                    |
| D 2 - 3                          | 1-10 = Dimmer<br>73-86 = DMX    |
| IV 4 - 5                         | 11-20 = Dimmer<br>87-92 = DMX   |
| IV 6 - 7                         | 21-30 = Dimmer<br>93-100 = DMX  |
| IV 8 - 9                         | 31-42 = Dimmer<br>101-108 = DMX |
| V 10 - 11                        | 43-52 = Dimmer<br>109-116 = DMX |
| VD 12 - 13                       | 53-62 = Dimmer<br>117-122 = DMX |
| VD 14 - 15                       | 63-72 = Dimmer<br>123-136 = DMX |

| Typ. In-house lighting list |          |
|-----------------------------|----------|
| Type                        | Quantity |
| 2kW Fresnels                | 20       |
| 1kW Fresnels                | 25       |
| 300-650W Pup                | 15       |
| 2x 55V soft                 | 20       |
| 4x 55V soft                 | 15       |
| MAC 600                     | 4        |
| MAC 500                     | 4        |
| MAC 300                     | 2        |
| MAC 250                     | 2        |
| PAR 64 long-sil             | 10       |
| PAR 64 floor-sil            | 10       |
| PAR 64 floor-bk             | 10       |
| Source 4 15-30              | 4        |
| Selecon pf 23-30            | 4        |
| Compuite spark              | 1        |

Service Elevator  
height = 2.5m  
depth = 3.0m  
width = 2.4m  
Access to  
Service Road

